

EUROBATEX® ISOLTEC

Eurobatex tubes and sheets with Isoltec jacketing factory applied.

Isoltec jacketing is a high performance product made up in 3 layers: the base layer is unplasticized PVC, the second layer is a Aluminium foil and the top layer is a transparent polymeric film. The composite jacketing has **very good puncture resistance**, is aesthetically pleasing and provides **long term weather protection**. Isoltec jacketing is also sold separately and so can be used over existing Eurobatex pipe and sheet insulation or can be applied at the same time on site and thereby allow the contractor to stagger joints between the insulation and jacketing layers.

Isoltec jacketing has the appearance of metal jacketing but the transparent film gives a system with a high emissivity surface with the benefits that this offers for condensation control. The Jacketing has good fire performance characteristics and the system has **high resistance to water penetration** so that it can be used on internal pipework which needs to be washed down regularly. Eurobatex and Isoltec together offer premium system able to protect external refrigeration pipework from persistent bird attack and a tough, good looking, hygienic system able to insulate internal pipework in food factories, dairies and abattoirs where power hoses are in regular use.

APPLICATIONS FIELDS



Industrial



Air Conditioning



Outdoor
applications



Building



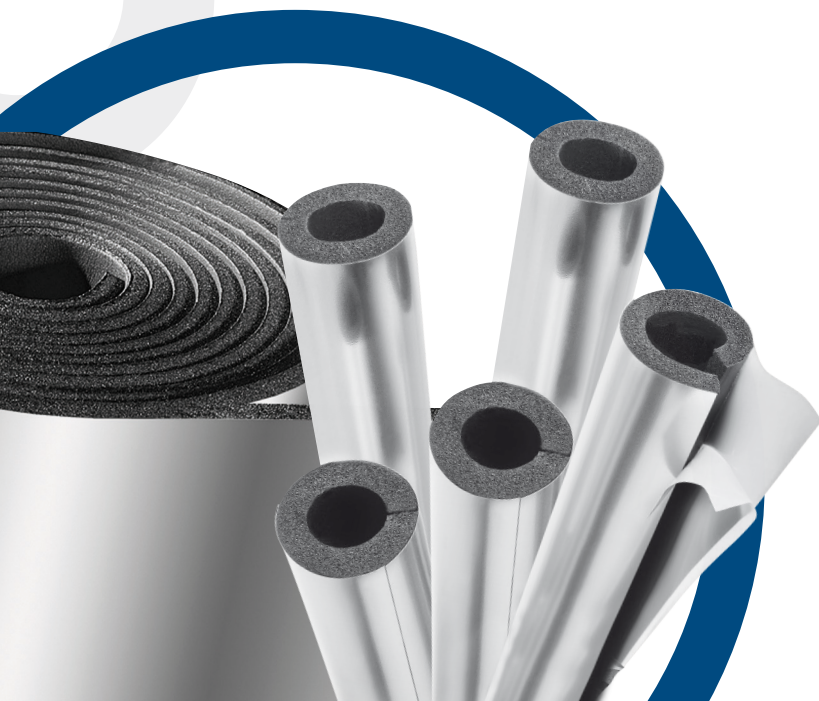
Refrigeration



Heating & Plumbing



Oil & Gas



EUROBATEX® ISOLTEC

TYPE OF MATERIAL:	Black closed-cell flexible elastomeric foam (FEF) coupled with a 3 layered coating; PVC, aluminium and UV resistant film
PRODUCT RANGE:	Pipe sections of 1 m length, in thicknesses from 9 mm to 60 mm and diameters from 15 mm to 170 mm. Sheets in rolls (also in self-adhesive version) with thicknesses from 6 mm to 50 mm
FIELDS OF APPLICATION:	Thermal insulation for commercial and industrial applications involving cold and hot ducts, large pipes and vessels, also for external applications
DIMENSIONAL TOLERANCES:	In accordance with the European Standard EN 14304
ENVIRONMENTAL INFORMATION:	Flexible and expanded CFC and HCFC-free rubber foam. It does not damage the ozone layer (ODP zero) and does not contribute to the greenhouse effect (GWP zero)
ADDITIONAL INFORMATION:	Self-adhesive material: acrylate based adhesive coating reinforced with mesh structure. Protection liner made of polyolefin. Traces of silicon can be found on the protective foil of the adhesive coating
STORAGE CONDITIONS/SHELF LIFE:	Store the material in a dry and clean environments at a temperature between 0 °C and 35 °C and a RH between 50% and 70%. Do not expose the material to heat or direct sunlight when stored. Products should not be kept in storage for more than one year

PHYSICAL PROPERTIES	RESULT OBTAINED		TEST METHOD
OPERATING TEMPERATURE RANGE*	-45 °C +110 °C		EN 14706 / EN 14707
THERMAL CONDUCTIVITY	At a mean temperature of 0 °C	Tubes ≤25 mm: $\lambda \leq 0,033$ W/m·K Tubes >25 mm: $\lambda \leq 0,035$ W/m·K Sheets ≤32 mm: $\lambda \leq 0,033$ W/m·K Sheets >32 mm: $\lambda \leq 0,034$ W/m·K	EN 12667 / EN ISO 8497
	At a mean temperature of +40 °C	Tubes ≤25 mm: $\lambda \leq 0,037$ W/m·K Tubes >25 mm: $\lambda \leq 0,039$ W/m·K Sheets ≤32 mm: $\lambda \leq 0,037$ W/m·K Sheets >32 mm: $\lambda \leq 0,038$ W/m·K	
WATER VAPOUR DIFFUSION RESISTANCE FACTOR	$\mu \geq 10000$		EN 13469 / EN 12096
FIRE PERFORMANCE	European Standard Euroclass	Tubes: C _L -s2,d0 Sheets: C-s3,d0	EN 13501-1
UV RESISTANCE	Excellent		UNI ISO 4892-2

CHARACTERISTICS OF THE COATING

PHYSICAL PROPERTIES	UNIT OF MEASURE	REFERENCE VALUES	TEST METHOD
COLOUR	-	Aluminium	-
WEIGHT	g/m ²	≈ 400	EN 22-286
THICKNESS	µm	280 ± 5	-
BREAKING LOAD	N/mm ²	> 35	EN ISO 527-3
ELONGATION AT BREAK	%	40	EN ISO 527-3
TEAR RESISTANCE	N	80	EN ISO 527-3
PERFORATION RESISTANCE Ø 0,3 mm	N	100	EN 14477
UV STABILITY TEST	-	Excellent	-
AIR LAYER THICKNESS (SD)	m	> 1500	-
EMISSIVITY ε	-	0,94	-

*NB: for application at lower temperatures please contact our technical department. For self-adhesive sheets, the maximum operating temperature is +90 °C.

System 1 CE Marking in accordance with the European Standard EN 14304. Certification of Constancy of Performance issued by CSI S.p.A. - Bollate IT-20021.

All the normatives quoted in this document are updated to the latest issued version. Union Foam S.p.A. reserves the right to modify any information at any time without prior notice.

EUROBATEX® ISOLTEC

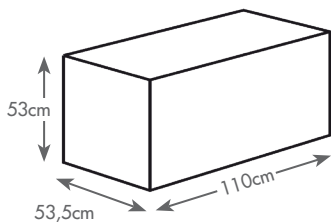
PRE-CUT, SELF-ADHESIVE PIPE SECTIONS 1m LENGTH

Copper pipe		Steel pipe			Thickness 13 mm		Thickness 19 mm	
Ext. Ø mm	Ext. Ø inches	Ext. Ø mm	DN	NPS	Item No. thickness x ID	m/ct	Item No. thickness x ID	m/ct
15	5/8				13 - 15EUR 0 TEC	136	19 - 15EUR 0 TEC	78
18		17,2	10	3/8	13 - 18EUR 0 TEC	118	19 - 18EUR 0 TEC	72
22	7/8	21,3	15	1/2	13 - 22EUR 0 TEC	98	19 - 22EUR 0 TEC	64
28	1 1/8	26,9	20	3/4	13 - 28EUR 0 TEC	78	19 - 28EUR 0 TEC	48
35	1 3/8	33,7	25	1	13 - 35EUR 0 TEC	58	19 - 35EUR 0 TEC	44
42	1 5/8	42,4	32	1 1/4	13 - 42EUR 0 TEC	48	19 - 42EUR 0 TEC	40
48		48,3	40	1 1/2	13 - 48EUR 0 TEC	40	19 - 48EUR 0 TEC	32
54	2 1/8				13 - 54EUR 0 TEC	34	19 - 54EUR 0 TEC	32
60		60,3	50	2	13 - 60EUR 0 TEC	32	19 - 60EUR 0 TEC	28
76,1		76,1	65	2 1/2	13 - 76EUR 0 TEC	26	19 - 76EUR 0 TEC	20
88,9		88,9	80	3	13 - 90EUR 0 TEC	24	19 - 90EUR 0 TEC	16
101					13 - 101EUR 0 TEC	16	19 - 101EUR 0 TEC	16
114		114,3	100	4	13 - 114EUR 0 TEC	16	19 - 114EUR 0 TEC	14
127					13 - 127EUR 0 TEC	12	19 - 127EUR 0 TEC	10
133					13 - 133EUR 0 TEC	12	19 - 133EUR 0 TEC	8
140		139,7	125	5	13 - 139EUR 0 TEC	12	19 - 139EUR 0 TEC	8

Copper pipe		Steel pipe			Thickness 25 mm		Thickness 32 mm	
Ext. Ø mm	Ext. Ø inches	Ext. Ø mm	DN	NPS	Item No. thickness x ID	m/ct	Item No. thickness x ID	m/ct
18		17,2	10	3/8	25 - 18EUR 0 TEC	50	32 - 18EUR 0 TEC	32
22	7/8	21,3	15	1/2	25 - 22EUR 0 TEC	42	32 - 22EUR 0 TEC	32
28	1 1/8	26,9	20	3/4	25 - 28EUR 0 TEC	40	32 - 28EUR 0 TEC	24
35	1 3/8	33,7	25	1	25 - 35EUR 0 TEC	32	32 - 35EUR 0 TEC	24
42	1 5/8	42,4	32	1 1/4	25 - 42EUR 0 TEC	26	32 - 42EUR 0 TEC	20
48		48,3	40	1 1/2	25 - 48EUR 0 TEC	22	32 - 48EUR 0 TEC	18
54	2 1/8				25 - 54EUR 0 TEC	22	32 - 54EUR 0 TEC	14
60		60,3	50	2	25 - 60EUR 0 TEC	18	32 - 60EUR 0 TEC	14
76,1		76,1	65	2 1/2	25 - 76EUR 0 TEC	16	32 - 76EUR 0 TEC	10
88,9		88,9	80	3	25 - 90EUR 0 TEC	12	32 - 90EUR 0 TEC	10
101					25 - 101EUR 0 TEC	10	32 - 101EUR 0 TEC	8
114		114,3	100	4	25 - 114EUR 0 TEC	10	32 - 114EUR 0 TEC	8
133					25 - 133EUR 0 TEC	6	32 - 133EUR 0 TEC	6
140		139,7	125	5	25 - 139EUR 0 TEC	6	32 - 139EUR 0 TEC	6

Different thicknesses and diameters available on request.
Material not in stock, produced on request – lead time 15 workdays

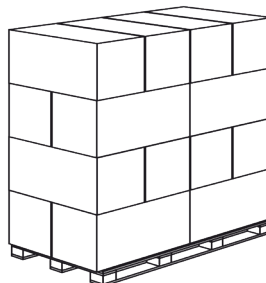
Packaging dimensions:
(volume = 0,30 m³)



Pallet dimensions:

120 x 210 x 277 cm
Volume = 7 m³
Box/pallet = 20

120 x 210 x 224 cm
Volume = 5,64 m³
Box/pallet = 16



EUROBATEX® ISOLTEC

CONTINUOUS ROLLS 1000 mm WIDTH

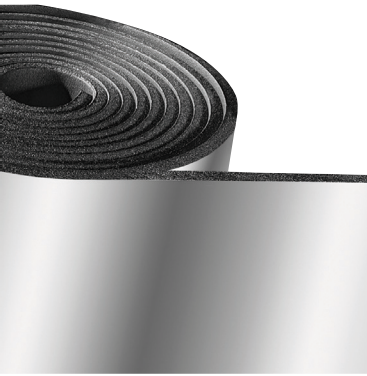
SELF-ADHESIVE

Item No.	Thickness mm	m ² /box
06EUR R TEC	6	30
10EUR R TEC	10	20
13EUR R TEC	13	14
19EUR R TEC	19	10
25EUR R TEC	25	8
32EUR R TEC	32	6

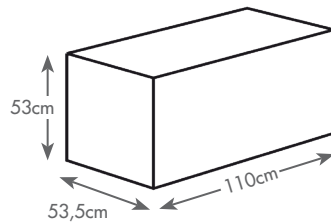
Item No.	Thickness mm	m ² /box
06EUR R TEC ADR	6	30
10EUR R TEC ADR	10	20
13EUR R TEC ADR	13	14
19EUR R TEC ADR	19	10
25EUR R TEC ADR	25	8
32EUR R TEC ADR	32	6

Different thicknesses available on request.

Material not in stock, produced on request – lead time 15 workdays



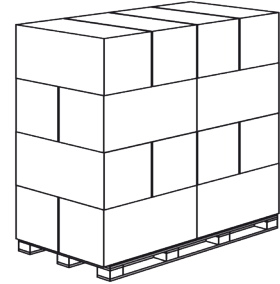
Packaging dimensions:
(volume = 0,30 m³)



Pallet dimensions:

120 x 210 x 277 cm
Volume = 7 m³
Box/pallet = 20

120 x 210 x 224 cm
Volume = 5,64 m³
Box/pallet = 16



EUROBATEX® ISOLTEC ELBOWS

Copper pipe		Steel pipe		Thickness 13 mm		Thickness 19 mm		Thickness 25 mm		Thickness 32 mm	
Ext. Ø mm	DN	Item No. thickness x ID	pcs/ct	Item No. thickness x ID	pcs/ct	Item No. thickness x ID	pcs/ct	Item No. thickness x ID	pcs/ct	Item No. thickness x ID	pcs/ct
18	10	CTECG 13 - 18	1	CTECG 19 - 18	1	CTECG 25 - 18	1	CTECG 32 - 18	1	CTECG 32 - 18	1
22	15	CTECG 13 - 22	1	CTECG 19 - 22	1	CTECG 25 - 22	1	CTECG 32 - 22	1	CTECG 32 - 22	1
28	20	CTECG 13 - 28	1	CTECG 19 - 28	1	CTECG 25 - 28	1	CTECG 32 - 28	1	CTECG 32 - 28	1
35	25	CTECG 13 - 35	1	CTECG 19 - 35	1	CTECG 25 - 35	1	CTECG 32 - 35	1	CTECG 32 - 35	1
42	32	CTECG 13 - 42	1	CTECG 19 - 42	1	CTECG 25 - 42	1	CTECG 32 - 42	1	CTECG 32 - 42	1
48	40	CTECG 13 - 48	1	CTECG 19 - 48	1	CTECG 25 - 48	1	CTECG 32 - 48	1	CTECG 32 - 48	1
54		CTECG 13 - 54	1	CTECG 19 - 54	1	CTECG 25 - 54	1	CTECG 32 - 54	1	CTECG 32 - 54	1
60	50	CTECG 13 - 60	1	CTECG 19 - 60	1	CTECG 25 - 60	1	CTECG 32 - 60	1	CTECG 32 - 60	1
76,1	65	CTECG 13 - 76	1	CTECG 19 - 76	1	CTECG 25 - 76	1	CTECG 32 - 76	1	CTECG 32 - 76	1
88,9	80	CTECG 13 - 89	1	CTECG 19 - 89	1	CTECG 25 - 89	1	CTECG 32 - 89	1	CTECG 32 - 89	1
101		CTECG 13 - 101	1	CTECG 19 - 101	1	CTECG 25 - 101	1	CTECG 32 - 101	1	CTECG 32 - 101	1
114	100	CTECG 13 - 114	1	CTECG 19 - 114	1	CTECG 25 - 114	1	CTECG 32 - 114	1	CTECG 32 - 114	1
133		CTECG 13 - 133	1	CTECG 19 - 133	1	CTECG 25 - 133	1	CTECG 32 - 133	1	CTECG 32 - 133	1
140	125	CTECG 13 - 140	1	CTECG 19 - 140	1	CTECG 25 - 140	1	CTECG 32 - 140	1	CTECG 32 - 140	1

For different thicknesses and diameters please contact our technical department.

Material not in stock, produced on request – lead time 15 workdays



ISOLTEC ELBOWS

Copper pipe		Steel pipe		Insulation thickness 13 mm		Insulation thickness 15 mm	
Ext. Ø mm	DN	Item No. thickness x ID	pcs/ct	Item No. thickness x ID	pcs/ct	Item No. thickness x ID	pcs/ct
18	10	CTEC - 050	5	CTEC - 050	5	CTEC - 050	5
22	15	CTEC - 050	5	CTEC - 050	5	CTEC - 050	5
28	20	CTEC - 060	5	CTEC - 060	5	CTEC - 060	5
35	25	CTEC - 060	5	CTEC - 070	5	CTEC - 070	5
42	32	CTEC - 070	5	CTEC - 080	5	CTEC - 080	5
48	40	CTEC - 080	5	CTEC - 080	5	CTEC - 080	5
54		CTEC - 080	5	CTEC - 090	5	CTEC - 090	5
60	50	CTEC - 090	5	CTEC - 090	5	CTEC - 090	5
76,1	65	CTEC - 100	5	CTEC - 110	5	CTEC - 110	5
88,9	80	CTEC - 120	5	CTEC - 120	5	CTEC - 120	5
101		CTEC - 140	1	CTEC - 130	5	CTEC - 130	5
114	100	CTEC - 140	1	CTEC - 150	1	CTEC - 150	1
133		CTEC - 170	1	CTEC - 170	1	CTEC - 170	1
140	125	CTEC - 170	1	CTEC - 170	1	CTEC - 170	1

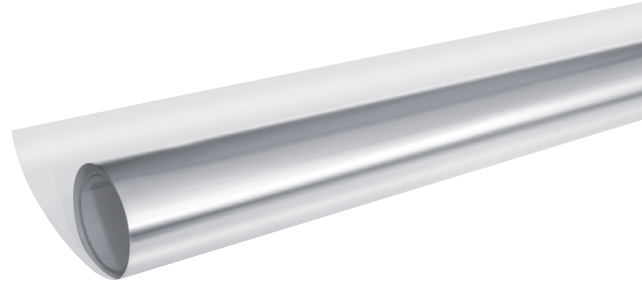
Copper pipe		Steel pipe		Insulation thickness 20 mm		Insulation thickness 25 mm		Insulation thickness 32 mm	
Ext. Ø mm	DN	Item No. thickness x ID	pcs/ct	Item No. thickness x ID	pcs/ct	Item No. thickness x ID	pcs/ct	Item No. thickness x ID	pcs/ct
18	10	CTEC - 060	5	CTEC - 070	5	CTEC - 080	5	CTEC - 080	5
22	15	CTEC - 070	5	CTEC - 080	5	CTEC - 080	5	CTEC - 090	5
28	20	CTEC - 070	5	CTEC - 080	5	CTEC - 080	5	CTEC - 090	5
35	25	CTEC - 080	5	CTEC - 090	5	CTEC - 090	5	CTEC - 100	5
42	32	CTEC - 090	5	CTEC - 100	5	CTEC - 100	5	CTEC - 110	5
48	40	CTEC - 090	5	CTEC - 100	5	CTEC - 100	5	CTEC - 110	5
54		CTEC - 100	5	CTEC - 110	5	CTEC - 110	5	CTEC - 120	5
60	50	CTEC - 100	5	CTEC - 110	5	CTEC - 110	5	CTEC - 120	5
76,1	65	CTEC - 120	5	CTEC - 130	5	CTEC - 130	5	CTEC - 140	1
88,9	80	CTEC - 130	5	CTEC - 140	1	CTEC - 140	1	CTEC - 150	1
101		CTEC - 150	1	CTEC - 160	1	CTEC - 160	1	CTEC - 170	1
114	100	CTEC - 160	1	CTEC - 170	1	CTEC - 170	1	CTEC - 180	1
133		CTEC - 180	1	CTEC - 190	1	CTEC - 190	1	CTEC - 200	1
140	125	CTEC - 190	1	CTEC - 200	1	CTEC - 200	1	CTEC - 210	1

Material not in stock, produced on request – lead time 15 workdays



ISOLTEC JACKETING

Item No.	Roll dimension	m ² /box
ALUPAK 230	width 1 m x 25 m length	25



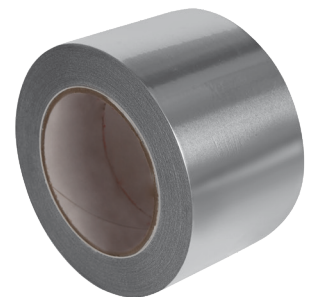
CHARACTERISTICS OF THE COATING

PHYSICAL PROPERTIES	UNIT OF MEASURE	REFERENCE VALUES	TEST METHOD
COLOUR	-	Aluminium	-
WEIGHT	g/m ²	≈ 340	EN 22-286
THICKNESS	µm	230 ± 5	-
BREAKING LOAD	N/mm ²	> 35	EN ISO 527-3
ELONGATION AT BREAK	%	48	EN ISO 527-3
TEAR RESISTANCE	N	70	EN ISO 527-3
PERFORATION RESISTANCE Ø 0,3 mm	N	23	EN 14477
UV STABILITY TEST	-	Excellent	-
AIR LAYER THICKNESS (SD)	m	1300	-
EMISSIVITY ε	-	0,94	-

ISOLTEC SELF-ADHESIVE TAPE

Item No.	Description	pcs/ct
NCA 25x50 TEC	aluminium tape width 25 mm x 50 m length	12
NCA 50x50 TEC	aluminium tape width 50 mm x 50 m length	12

Tapes with different width available upon request



CNX S ADHESIVE

Item No.	Description	pcs/ct
CNX 850 S	850 g - 1000 ml tin	12
CNX 425 S	425 g - 500 ml tin	24
CNX 200 S	200 g - 225 ml tin including brush	24



THERMAL INSULATION PRODUCTS FOR BUILDING EQUIPMENT AND INDUSTRIAL INSTALLATIONS. FACTORY MADE FLEXIBLE ELASTOMERIC FOAM (FEF) PRODUCTS

Dimensional tolerances specified by the European product Standard EN 14304

Form of delivery	Length	Width	Thickness		Squareness	Inside diameter	
			Declared	Tolerance		$D_i \leq 100$	$D_i > 100$
Tubes	$\pm 1,5\%$	-	$d_o \leq 8$	± 1	3,0 mm	$D_{iD} + 1 \leq D_i \leq D_{iD} + 4$	$D_{iD} + 1 \leq D_i \leq D_{iD} + 6$
			$8 < d_o \leq 18$	$\pm 1,5$			
			$18 < d_o \leq 31$	$\pm 2,5$			
			$d_o > 31$	± 3			
Sheets	$\pm 1,5\%$	$\pm 2\%$	$d_o \leq 6$	± 1	3,0 mm/m (length/width) 3,0 mm (thickness)	-	-
			$6 < d_o \leq 19$	$\pm 1,5$			
			$d_o > 19$	± 2			
Rolls	+ 5% - 1.5%	$\pm 2\%$	$d_o \leq 6$	± 1	3,0 mm/m (length/width) 3,0 mm (thickness)	-	-
			$6 < d_o \leq 19$	$\pm 1,5$			
			$d_o > 19$	± 2			
Tapes	+ 5% - 1.5%	$\pm 2\%$	$d_o = 3$	- 0.1 + 1,5	-	-	-



Union Foam S.p.A.
 via dell'Industria 8
 20882 Bellusco (MB) Italy
 tel. +39.039.62089.1
 sales@unionfoam.it
 www.unionfoam.it