

EUROBATEX® GLASTEC

EUROBATEX sheets and pipes covered with GLASTEC, an aluminium and mineral fibre based jacketing with a black external finish of high resistance against mechanical abuse and UV radiation.

This product is an ideal solution for the thermal insulation of air conditioning ducts and heating & plumbing systems in both industrial and civil applications. Thanks to its **excellent fire performance B_{L-s1,d0}** for pipes and **B-s2,d0** for sheets, it is particularly indicated where high safety standards are required.

The product is also ideal for railway applications, achieving HL3/R1 hazard level according to EN 45545.

APPLICATIONS FIELDS



Industrial



Refrigeration



Building



Railways



Heating & Plumbing



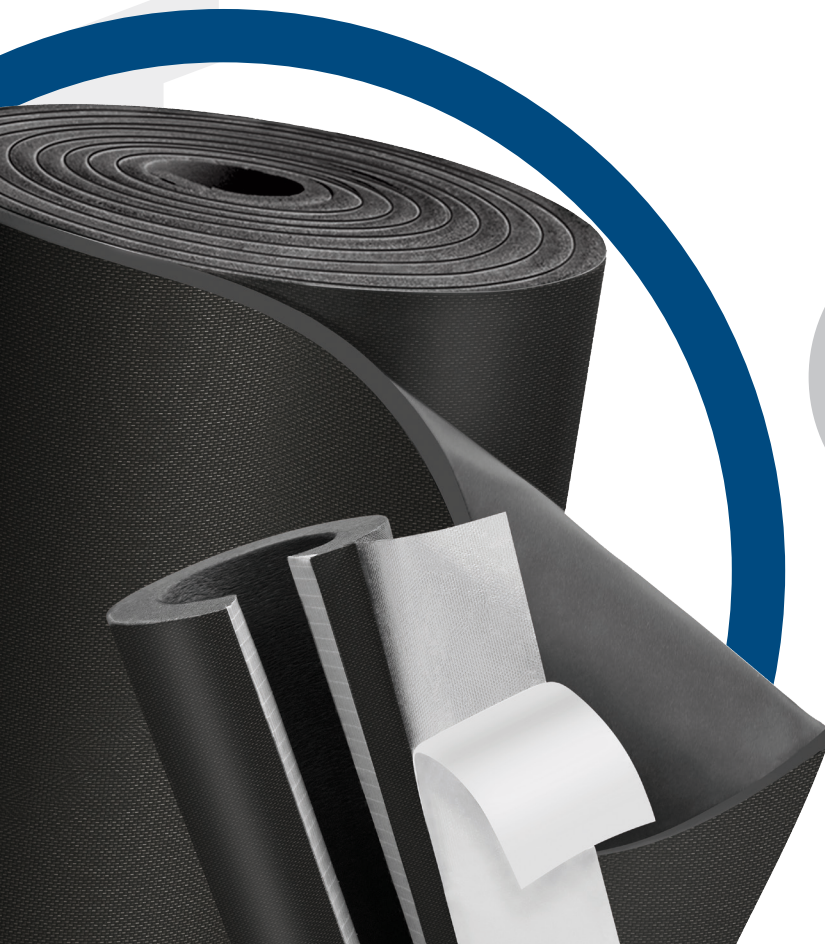
Oil & Gas



Air Conditioning



Outdoor applications



EUROBATEX® GLASTEC

TYPE OF MATERIAL:	Black closed-cell flexible elastomeric foam (FEF) coupled with mineral fibre material with a black coloured exterior finishing
PRODUCT RANGE:	Self-adhesive pipe sections of 1 m with thicknesses from 13 mm to 50 mm and diameters from 14 mm to 170 mm. Sheets in rolls (also in self-adhesive version) with thicknesses from 6 mm to 50 mm
FIELDS OF APPLICATION:	Thermal insulation of refrigeration, air conditioning and heating & plumbing services in commercial, industrial and domestic applications
DIMENSIONAL TOLERANCES:	In accordance with the European Standard EN 14304
ENVIRONMENTAL INFORMATION:	CFC, HCFC-free flexible and expanded rubber foam. It does not damage the ozone layer (ODP zero) and does not contribute to the greenhouse effect (GWP zero)
ADDITIONAL INFORMATION:	Self-adhesive material: acrylate based adhesive coating available plain or reinforced with mesh structure. Protection liner made of polyolefin. Traces of silicon can be found on the foil protecting the self-adhesive coating
STORAGE CONDITIONS/SHELF LIFE:	Store the material in a dry and clean environment at a temperature between 0 °C and 35 °C and a RH between 50% and 70%. Do not expose the material to heat or direct sunlight when stored. Products should not be kept in storage for more than one year

PHYSICAL PROPERTIES	RESULT OBTAINED		TEST METHOD
OPERATING TEMPERATURE RANGE*	-45 °C +110 °C		EN 14706 / EN 14707
THERMAL CONDUCTIVITY	At a mean temperature of 0 °C	Tubes thk. ≤25 mm: $\lambda \leq 0,033$ W/m·K Tubes thk. >25 mm: $\lambda \leq 0,035$ W/m·K Sheets thk. ≤32 mm: $\lambda \leq 0,033$ W/m·K Sheets thk. >32 mm: $\lambda \leq 0,034$ W/m·K	EN 12667 / EN ISO 8497
	At a mean temperature of +40 °C	Tubes thk. ≤25 mm: $\lambda \leq 0,037$ W/m·K Tubes thk. >25 mm: $\lambda \leq 0,039$ W/m·K Sheets thk. ≤32 mm: $\lambda \leq 0,037$ W/m·K Sheets thk. >32 mm: $\lambda \leq 0,038$ W/m·K	
WATER VAPOUR DIFFUSION RESISTANT FACTOR	$\mu \geq 10000$		EN 13469 / EN 12086
FIRE PERFORMANCE	European Standard Euroclass	Tubes: B _L -s1,d0 Sheets: B-s2,d0	EN 13501-1
RAILWAYS	HL-3/R1		EN 45545
UV RESISTANCE	Excellent		UNI ISO 4892-2
CORROSION RISK	Meets test requirements		EN 13468

CHARACTERISTICS OF THE COVERING

PHYSICAL PROPERTIES	REFERENCE VALUES
THICKNESS	≈ 200 μm
WEIGHT	≈ 250 g/m ²

External finishing colour: black

*NB: for applications at lower temperature please contact our technical department. For self-adhesive sheets, the maximum operating temperature standard is +90 °C.

System 1 CE Marking in accordance with the European Standard EN 14304. Certification of Constancy of Performance issued by CSI S.p.A. - Bollate IT-20021.

All the normatives quoted in this document are updated to the latest issued version. Union Foam S.p.A. reserves the right to modify any information at any time without prior notice.

EUROBATEX® GLASTEC - Black coloured external finishing PRE-CUT, SELF-ADHESIVE PIPE SECTIONS 1m LENGTH

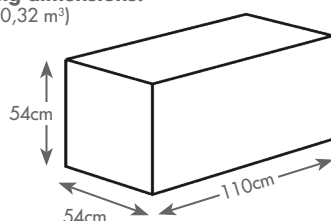
Copper pipe		Steel pipe			Thickness 13 mm		Thickness 19 mm	
Ext. Ø mm	Ext. Ø inches	Ext. Ø mm	DN	NPS	Item No. thickness x ID	m/ct	Item No. thickness x ID	m/ct
14		13,5	8	1/4	13 - 15EUR 0 GLAS	136	19 - 15EUR 0 GLAS	78
18		17,2	10	3/8	13 - 18EUR 0 GLAS	118	19 - 18EUR 0 GLAS	72
22	7/8	21,3	15	1/2	13 - 22EUR 0 GLAS	98	19 - 22EUR 0 GLAS	64
28	1 1/8	26,9	20	3/4	13 - 28EUR 0 GLAS	78	19 - 28EUR 0 GLAS	48
35	1 3/8	33,7	25	1	13 - 35EUR 0 GLAS	58	19 - 35EUR 0 GLAS	44
42	1 5/8	42,4	32	1 1/4	13 - 42EUR 0 GLAS	48	19 - 42EUR 0 GLAS	40
48		48,3	40	1 1/2	13 - 48EUR 0 GLAS	40	19 - 48EUR 0 GLAS	32
54	2 1/8				13 - 54EUR 0 GLAS	34	19 - 54EUR 0 GLAS	32
60		60,3	50	2	13 - 60EUR 0 GLAS	32	19 - 60EUR 0 GLAS	28
76,1		76,1	65	2 1/2	13 - 76EUR 0 GLAS	26	19 - 76EUR 0 GLAS	20
88,9		88,9	80	3	13 - 90EUR 0 GLAS	24	19 - 90EUR 0 GLAS	16
101					13 - 101EUR 0 GLAS	24	19 - 101EUR 0 GLAS	16
114		114,3	100	4	13 - 114EUR 0 GLAS	16	19 - 114EUR 0 GLAS	14
127					13 - 127EUR 0 GLAS	12	19 - 127EUR 0 GLAS	10
140		139,7	125	5	13 - 139EUR 0 GLAS	12	19 - 139EUR 0 GLAS	8

Thickness 25 mm		Thickness 32 mm	
Item No. thickness x ID	m/ct	Item No. thickness x ID	m/ct.
25 - 18EUR 0 GLAS	50	32 - 18EUR 0 GLAS	32
25 - 22EUR 0 GLAS	42	32 - 22EUR 0 GLAS	32
25 - 28EUR 0 GLAS	40	32 - 28EUR 0 GLAS	24
25 - 35EUR 0 GLAS	32	32 - 35EUR 0 GLAS	24
25 - 42EUR 0 GLAS	26	32 - 42EUR 0 GLAS	20
25 - 48EUR 0 GLAS	22	32 - 48EUR 0 GLAS	18
25 - 54EUR 0 GLAS	22	32 - 54EUR 0 GLAS	14
25 - 60EUR 0 GLAS	18	32 - 60EUR 0 GLAS	14
25 - 76EUR 0 GLAS	16	32 - 76EUR 0 GLAS	10
25 - 90EUR 0 GLAS	12	32 - 89EUR 0 GLAS	10
25 - 101EUR 0 GLAS	10	32 - 101EUR 0 GLAS	8
25 - 114EUR 0 GLAS	10	32 - 114EUR 0 GLAS	8
25 - 127EUR 0 GLAS	6	32 - 133EUR 0 GLAS	6
25 - 139EUR 0 GLAS	4	32 - 139EUR 0 GLAS	6



Product not in stock, available on request.
Different thicknesses and diameters available on request.

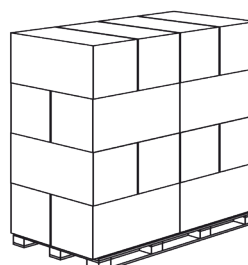
Packaging dimensions:
(volume = 0,32 m³)



Pallet dimensions:

120 x 210 x 282 cm
Volume = 7,10 m³
Box/pallet = 20

120 x 210 x 228 cm
Volume = 5,74 m³
Box/pallet = 16



EUROBATEX® GLASTEC - Black coloured external finishing CONTINUOUS ROLLS 1000 mm WIDTH

SELF-ADHESIVE

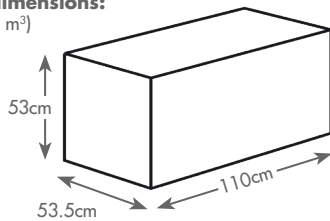
Item No.	Thickness mm	m ² /box
06EUR R GLAS N	6	30
10EUR R GLAS N	10	20
13EUR R GLAS N	13	14
19EUR R GLAS N	19	10
25EUR R GLAS N	25	8
32EUR R GLAS N	32	6

Item No.	Thickness mm	m ² /box
06EUR R GLAS N ADR	6	30
10EUR R GLAS N ADR	10	20
13EUR R GLAS N ADR	13	14
19EUR R GLAS N ADR	19	10
25EUR R GLAS N ADR	25	8
32EUR R GLAS N ADR	32	6



Product not in stock, available on request.
Different thicknesses available on request

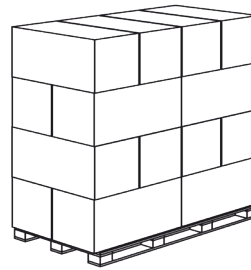
Packaging dimensions: (volume = 0,30 m³)



Pallet dimensions:

120 x 210 x 277 cm
Volume = 7 m³
Box/pallet = 20

120 x 210 x 224 cm
Volume = 5,64 m³
Box/pallet = 16



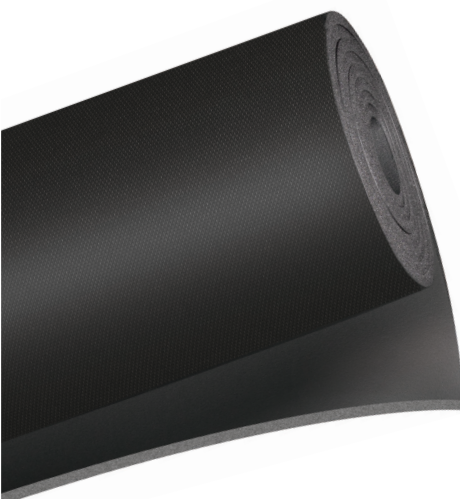
CONTINUOUS ROLLS 1500 mm WIDTH

SELF-ADHESIVE

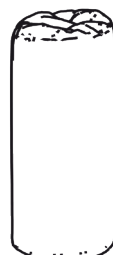
Item No.	Thickness mm	m ² /box
06EUR RH1,5 GLAS	6	45
08EUR RH1,5 GLAS	8	37,5
10EUR RH1,5 GLAS	10	30
12EUR RH1,5 GLAS	12	22,5
15EUR RH1,5 GLAS	15	18
20EUR RH1,5 GLAS	20	15
25EUR RH1,5 GLAS	25	12
30EUR RH1,5 GLAS	30	9

Item No.	Thickness mm	m ² /box
06EUR RH1,5 GLAS ADR	6	45
08EUR RH1,5 GLAS ADR	8	37,5
10EUR RH1,5 GLAS ADR	10	30
12EUR RH1,5 GLAS ADR	12	22,5
15EUR RH1,5 GLAS ADR	15	18
20EUR RH1,5 GLAS ADR	20	15
25EUR RH1,5 GLAS ADR	25 </td <td>12</td>	12
30EUR RH1,5 GLAS ADR	30	9

Product not in stock, available on request.

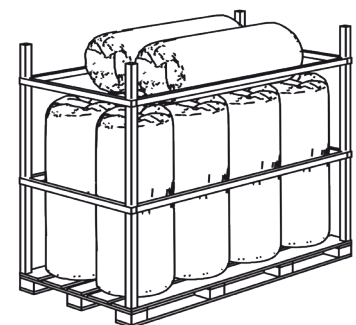


Single packaging:



Pallet dimensions:

100 x 210 x 210 cm
Volume = 4,41 m³
Bags/pallet = 10



GLASTEC - SELF-ADHESIVE TAPE

Item No.	Description	pcs/ct
NC GLAS N 50x25 M	black adhesive tape, width 50 mm x 25 m length	20
NC GLAS N 75x25 M	black adhesive tape, width 75 mm x 25 m length	13
NC GLAS N 100x25 M	black adhesive tape, width 100 mm x 25 m length	10



CNX S ADHESIVE

Item No.	Description	pcs/ct
CNX 850 S	850 g - 1000 ml tin	12
CNX 425 S	425 g - 500 ml tin	24
CNX 200 S	200 g - 225 ml tin including brush	24



THERMAL INSULATION PRODUCTS FOR BUILDING EQUIPMENT AND INDUSTRIAL INSTALLATIONS. FACTORY MADE FLEXIBLE ELASTOMERIC FOAM (FEF) PRODUCTS

Dimensional tolerances specified by the European product Standard EN 14304

Form of delivery	Length	Width	Thickness		Squareness	Inside diameter	
			Declared	Tolerance		$D_i \leq 100$	$D_i > 100$
Tubes	$\pm 1,5\%$	-	$d_o \leq 8$	± 1	3,0 mm	$D_{id} + 1 \leq D_i \leq D_{id} + 4$	$D_{id} + 1 \leq D_i \leq D_{id} + 6$
			$8 < d_o \leq 18$	$\pm 1,5$			
			$18 < d_o \leq 31$	$\pm 2,5$			
			$d_o > 31$	± 3			
Sheets	$\pm 1,5\%$	$\pm 2\%$	$d_o \leq 6$	± 1	3,0 mm/m (length/width) 3,0 mm (thickness)	-	-
			$6 < d_o \leq 19$	$\pm 1,5$			
			$d_o > 19$	± 2			
Rolls	+ 5% - 1.5%	$\pm 2\%$	$d_o \leq 6$	± 1	3,0 mm/m (length/width) 3,0 mm (thickness)	-	-
			$6 < d_o \leq 19$	$\pm 1,5$			
			$d_o > 19$	± 2			
Tapes	+ 5% - 1.5%	$\pm 2\%$	$d_o = 3$	- 0.1 + 1,5	-	-	-



Union Foam S.p.A.
 via dell'Industria 8
 20882 Bellusco (MB) Italy
 tel. +39.039.62089.1
 sales@unionfoam.it
 www.unionfoam.it